



Apartment

# APARTMENT 10, ROMAN CORNER NORTHAMPTON ROAD, TOWCESTER, TOWCESTER,

PCM

## £1,050 PCM

### FEATURES

- A Modern Two Bedroom Apartment
- An Open Plan Lounge, Kitchen & Diner
- Double Glazed Windows
- Council Tax Band: B
- In A Sought After Central Location
- Two Double Bedrooms & Built-in Wardrobes
- Unfurnished, Available 1st July 2026
- EPC Energy Rating: B



# HOWKINS & HARRISON

# 2 Bedroom Apartment located in Towcester

Call us on

01327 359164

towcesterletts@howkinsandharrison.co.uk

Howkins & Harrison are delighted to offer for let this two-bedroom apartment located in the heart of Towcester yet just a few yards from open countryside.

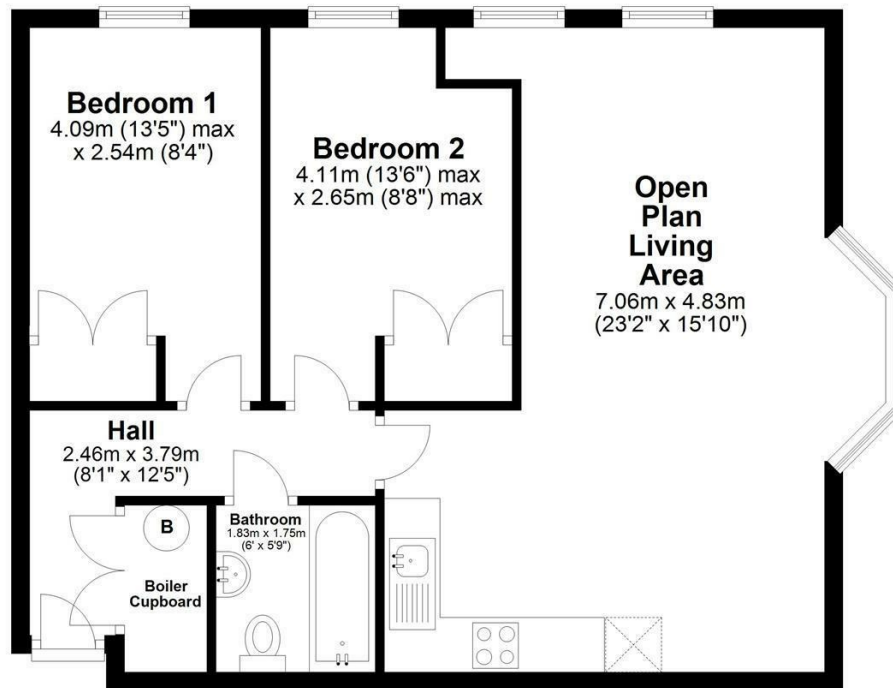
Finished to a high specification this apartment benefits from a fitted kitchen open plan to the living area, two double bedroom and a three-piece fitted bathroom. \*No Parking available with this property\* Offered unfurnished, available immediately. EPC Rating B.

Situated within the heart of this thriving market town and close to Towcester's many amenities including primary and secondary schools, shops, bars and restaurants, doctor and dentist surgeries and the leisure centre. There is good access to the main roads including the M1 motorway at junction 15a, the M40, A5 and A43 with train stations at Milton Keynes and Northampton offering services to London Euston with journey times of around 35 minutes and 50 minutes respectively. Sporting activities in the area include golf at Whittlebury Hall, Silverstone & Woburn, sailing at Caldecotte Lake, water sports at Willen Lake, local junior sports teams including football, rugby, netball, hockey and cricket and motor racing at the home of the British Grand Prix, Silverstone circuit.

Council Tax Band

**B**

## Ground Floor



Not to scale  
Plan produced using PlanUp.

**Apartment 10, Roman Corner, Towcester**

Energy Efficiency Rating		Current	Potential
<i>Very energy efficient - lower running costs</i>			
(92 plus) <b>A</b>			
(81-91) <b>B</b>			
(69-80) <b>C</b>			
(55-68) <b>D</b>			
(39-54) <b>E</b>			
(21-38) <b>F</b>			
(1-20) <b>G</b>			
<i>Not energy efficient - higher running costs</i>			
<b>England &amp; Wales</b>		EU Directive 2002/91/EC	

Agents Note: Whilst every care has been taken to prepare these particulars, they are for guidance purposes only. All measurements are approximate and are for general guidance purposes only and whilst every care has been taken to ensure their accuracy, they should not be relied upon and potential buyers are advised to recheck the measurements.

**HOWKINS &  
HARRISON**